

## Thin micro electromagnetic clutch



NEW

● **The next generation high torque clutch with low power consumption**

Excellent energy saving performance  
an energy-saving next-generation clutch that maintains conventional performance with 2.0W specifications.

● **Low power consumption and high torque**

Designed for low load and low price products by reducing parts cost and machining cost.

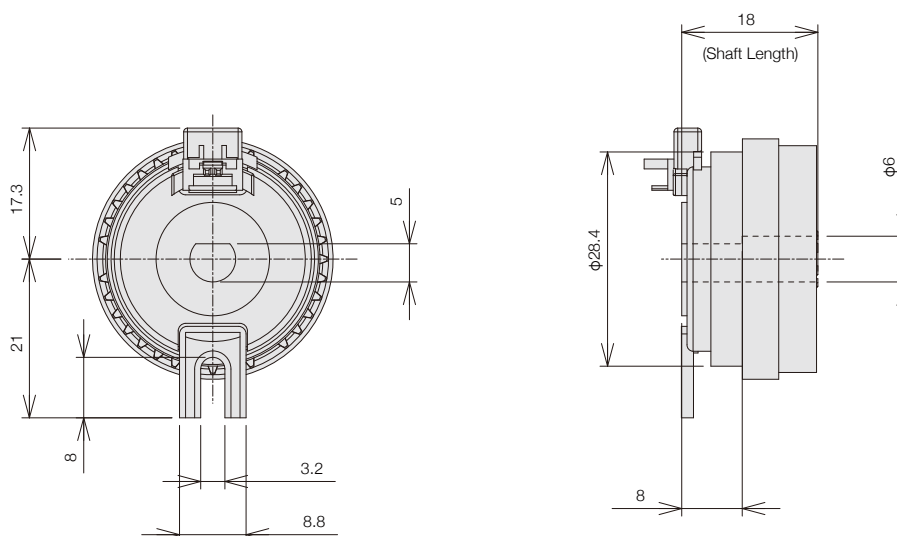
● **Maintains the same size as conventional models**

It is easy to switch from our the MCA series product.

● **Excellent cost performance**

It is possible to reduce costs from parts structures design and minimum processing cost.

■ **Dimensions**



SMT35AC

(Unit: mm)

Type	SMT35AC
Rated Voltage	DC24V
Capacity	2.0W(±10%)
Static Friction Torque	0.343Nm (3.5kgfcm)
Insulation Classification	E Class[Electrical Safety·TUV(IEC950)] A Class[UL·CSA]
Withstand Voltage	AC 600V for 1 second
Insulating Resistance	Above 100MΩ by DC500V-Mega
Safety Standard	The standards of Electrical Safety, UL, CSA, IEC, EN, CE are satisfied
Compatible Connector	Crimp style: JST CZ connector housing: CZHR-0.2V CZH connector contact: SCZH-002T-P0.5 IDC style: JST CZ connector socket:02-CZ-B Remark) The * is difference base on color
Shaft	Besides of the standard, the direction and dimension of D-Cut shall be discussed

\* The shape, specification etc are subject to change without prior notice.

Application

OA equipment (multifunction machine, printer, printing machine),  
automatic sales machine, ATM, automobile door for home use,  
automatic ticket issuing machine, medical equipment, automatic cartoon etc.