

Between two rotating axes of machines and devices, force transmission/interruption (overload protection) is possible



● Dry multi-plate friction type mechanical clutch

When the torque is below the specified torque, force is transmitted. A clutch with a mechanism that slips when the load torque exceeds the specified torque.

● Compact type with an outer diameter of $\phi 27$ mm and a total length of 27.8 mm

Small type, support low torque

● No torque adjustment required during use

Can be used without fine torque adjustment

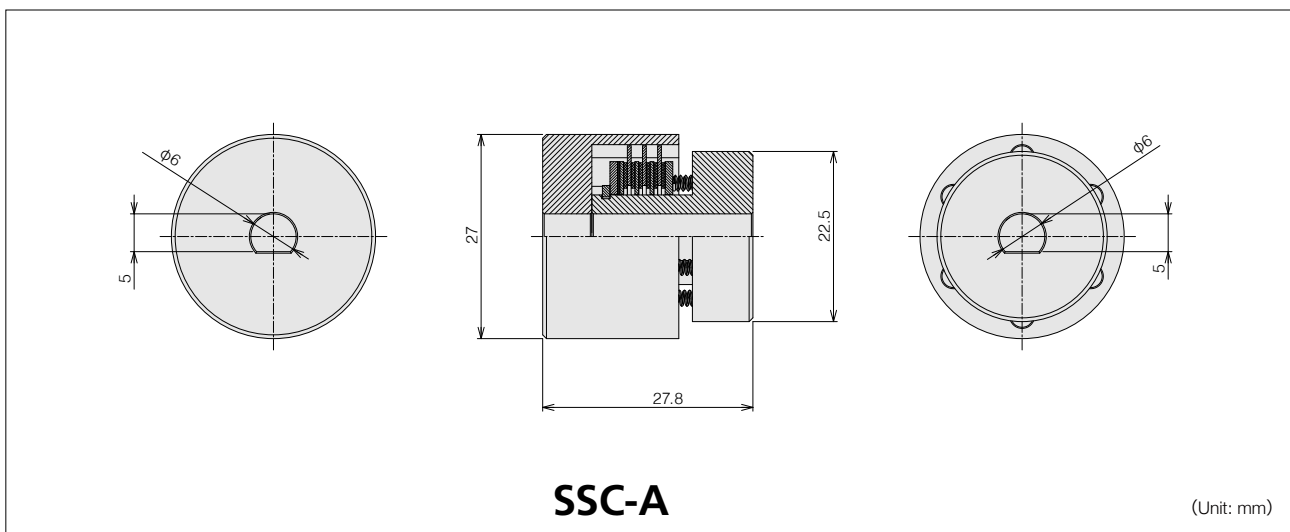
● Installation without tools

Easy installation by simply inserting into a shaft with D-cut

● Eco clutch without electricity input

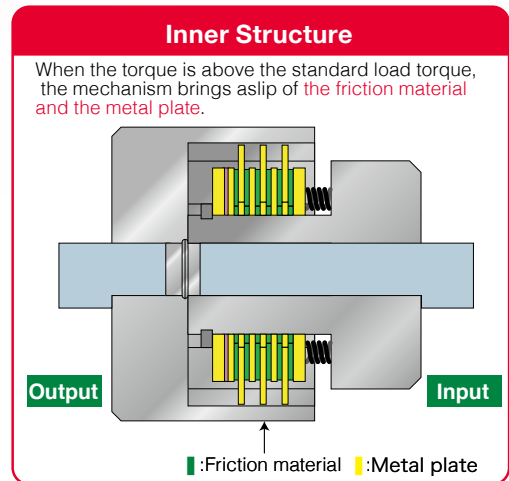
Electricity is not required, so wiring work can be saved. Contribute to power saving

■ Dimensions



Type	SSC-A
Input method	Connection between two axes
Static Friction Torque	0.49N·m (5.0kgfcm) $\pm 10\%$
Number of rotations use	below 90rpm

* The shape, specification etc are subject to change without prior notice.



Application

- for devices requiring continuous slip, overload protection device
- for Paper and roll feed drive
- for amusement device