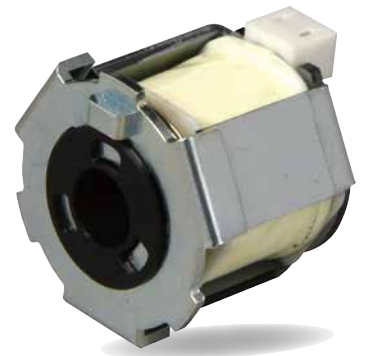


Micro Plunger Clutch

MPC

Plunger Suction type device that can shorten assembling time and save space



▶ Stroke amount 2mm and a suction force of 10gf

With stroke amount of 2mm and a weight of 10g can be sucked.

By returning spring inside and it returns to the original position when the power is off.

Spring force 10gf, rated capacity 4W.

▶ A freedom in installation with a thumb size

Maximum outer diameter is 25 mm, total length is 22 mm.

▶ Easy to install and no need for adjustment

Since there is a hole in the center of the device, it can be installed on the same axis with a counterpart component.

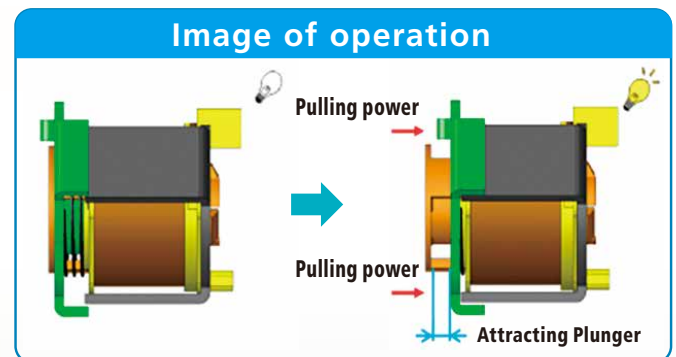
There is no need for mounting adjustments such as alignment and engagement with the other party.

▶ Noise reduction

As no touching metals each other, there is no high metal noise during operation.

Approximately 15% noise deduction comparing to solenoid (movable iron core type).

*Based on our research.



Application

Position of controlling the timing of the movement of a counterpart component

OA equipment, FA equipment

Amusement Equipment, Security equipment, etc...

 SINFONIA GROUP

SINFONIA MICROTEC CO., LTD.

Asahi Seimei Akashi Building, 2-2-20, Honmachi, Akashi-shi, Hyogo Pref. 673-0892, Japan

TEL: +81-78-939-3401 FAX: +81-78-939-3409

Inquiry

SINFONIA TECHNOLOGY CO., LTD.

Shiba NBF Tower, 1-30, Shibadaimon 1-chome, Minato-ku, Tokyo, 105-8564, Japan

TEL +81-3-5473-1826 FAX +81-3-5473-1845

● Shapes and specifications are subject to change without notice.

*Homepage <http://www.sinfo-mt.co.jp/en/>

SMTE01-350 2207A